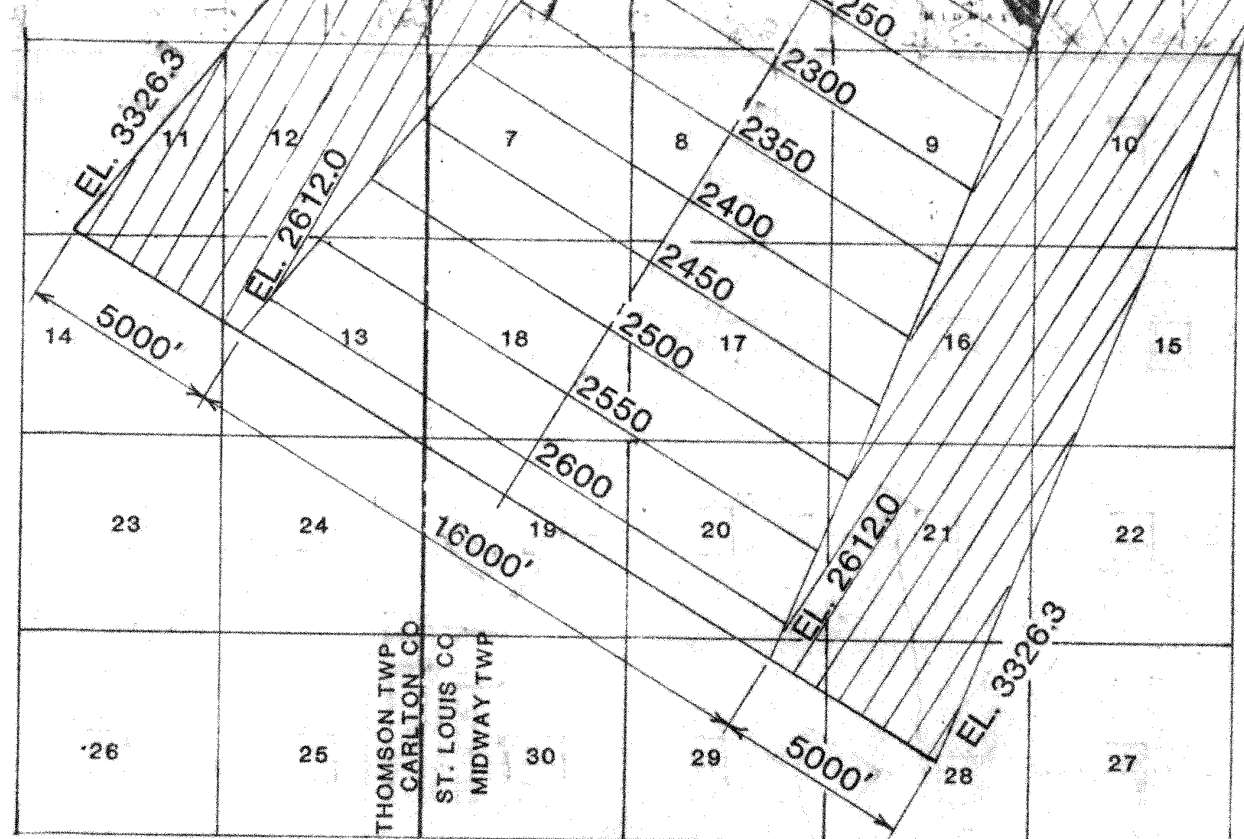


NOTE: FEDERAL AVIATION REGULATIONS(FAR)
PART 77.25 SURFACES SHOWN. HEIGHT
LIMITATION ZONING LIMITS DETAILED ON
SHEET 3.

DULUTH INTERNATIONAL AIRPORT AIRPORT ZONING MAPS

DATE OF ENACTMENT : 4/18/88
EFFECTIVE DATE : 6/18/88

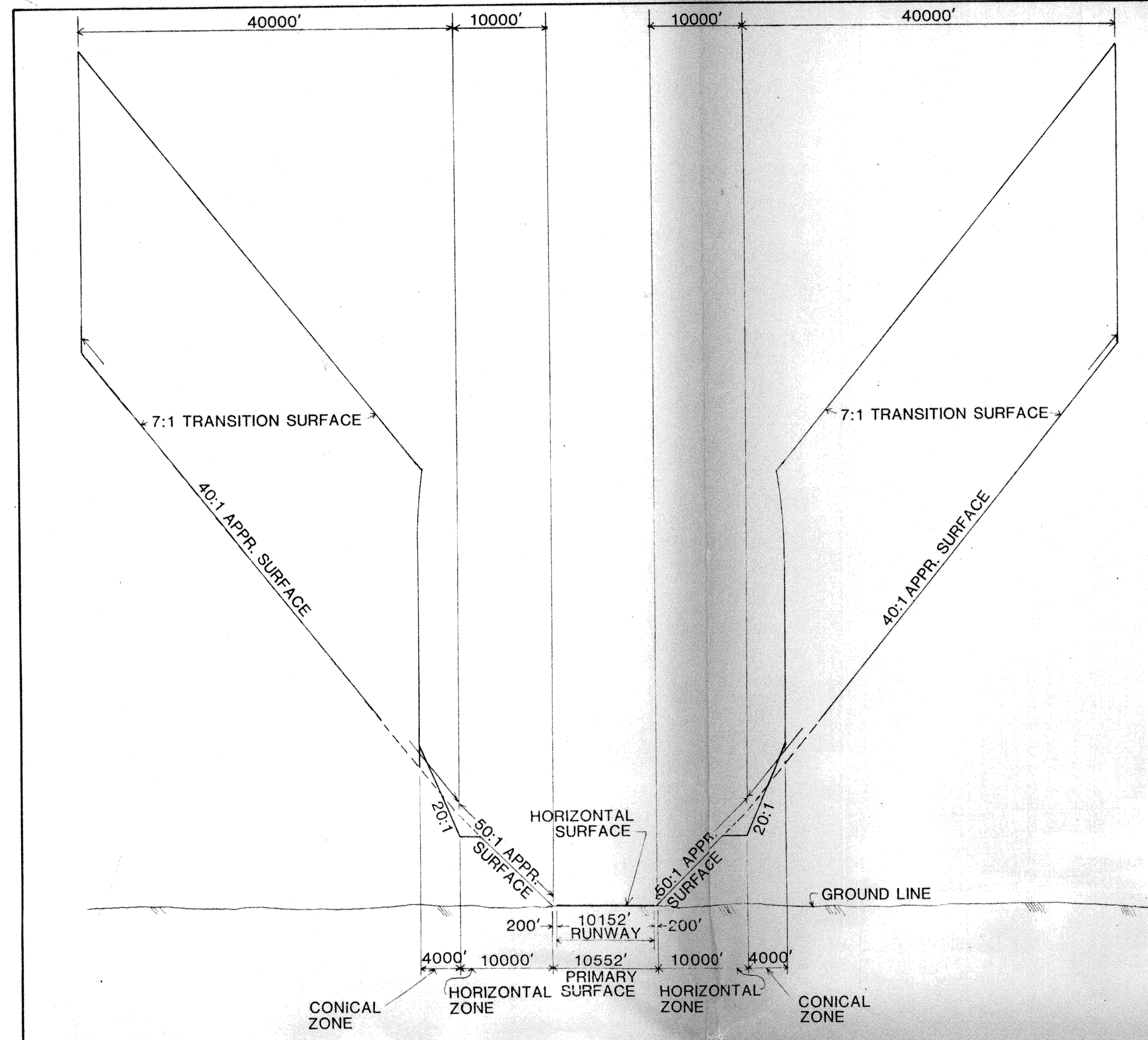


JOINT AIRPORT ZONING BOARD
David K. Melenka
CHAIRMAN DATE 4/18/88

JDS	4/18/88	DATE OF ENACTMENT
BY	DATE	CHANGE
REVISIONS		

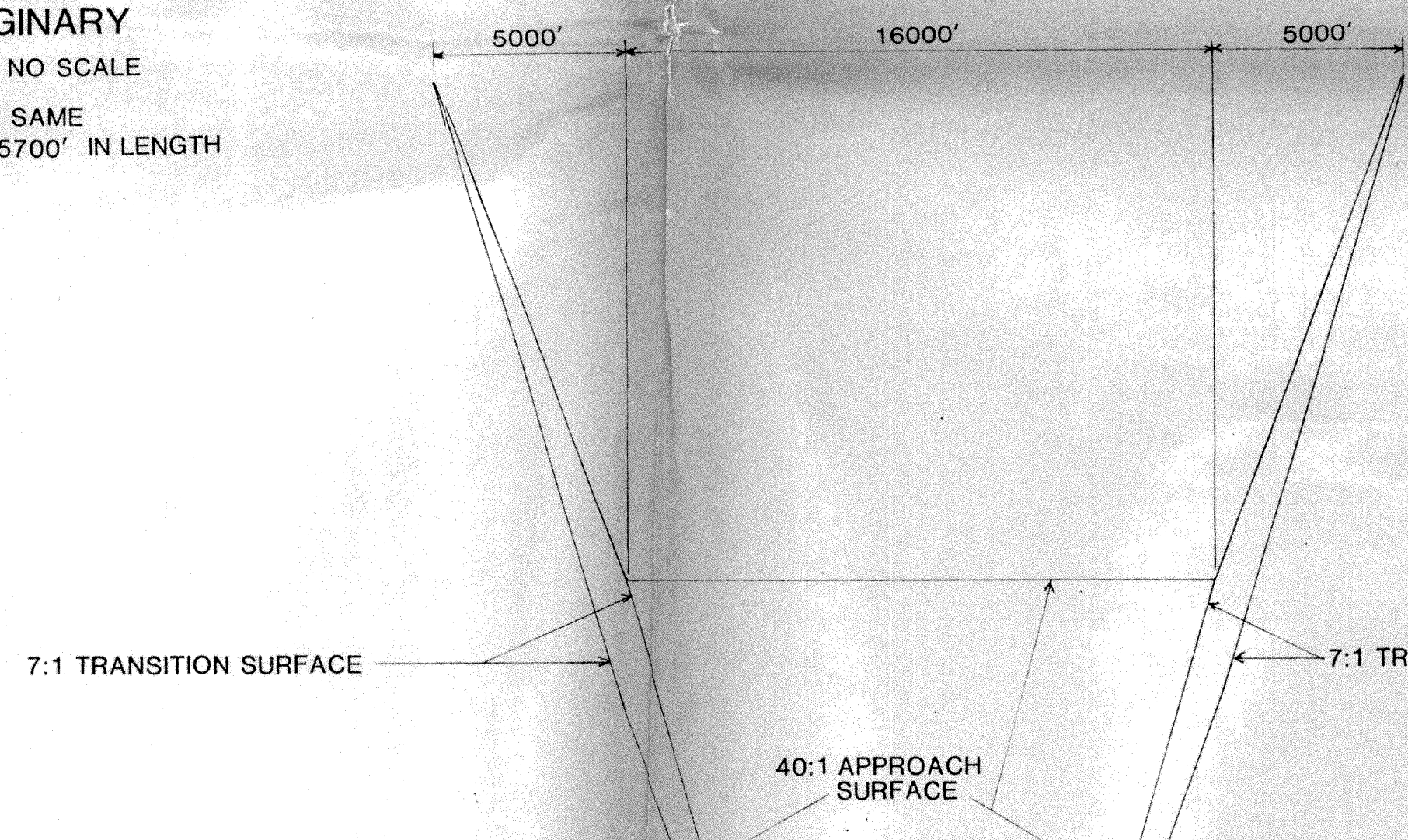
DULUTH INTERNATIONAL AIRPORT
AIRPORT ZONING MAP
ENGINEERS ARCHITECTS PLANNERS
RALPH BURKE ASSOCIATES
4124 GUEBEC AVENUE NORTH - MINNEAPOLIS, MN 55427

IMAGINARY SURFACES PLAN			
dr	BF	date 4/6/84	1 of 5
ck	MO	scale AS SHOWN	
approv		job no 83049AP	
approv		file no	
approv		dr no	

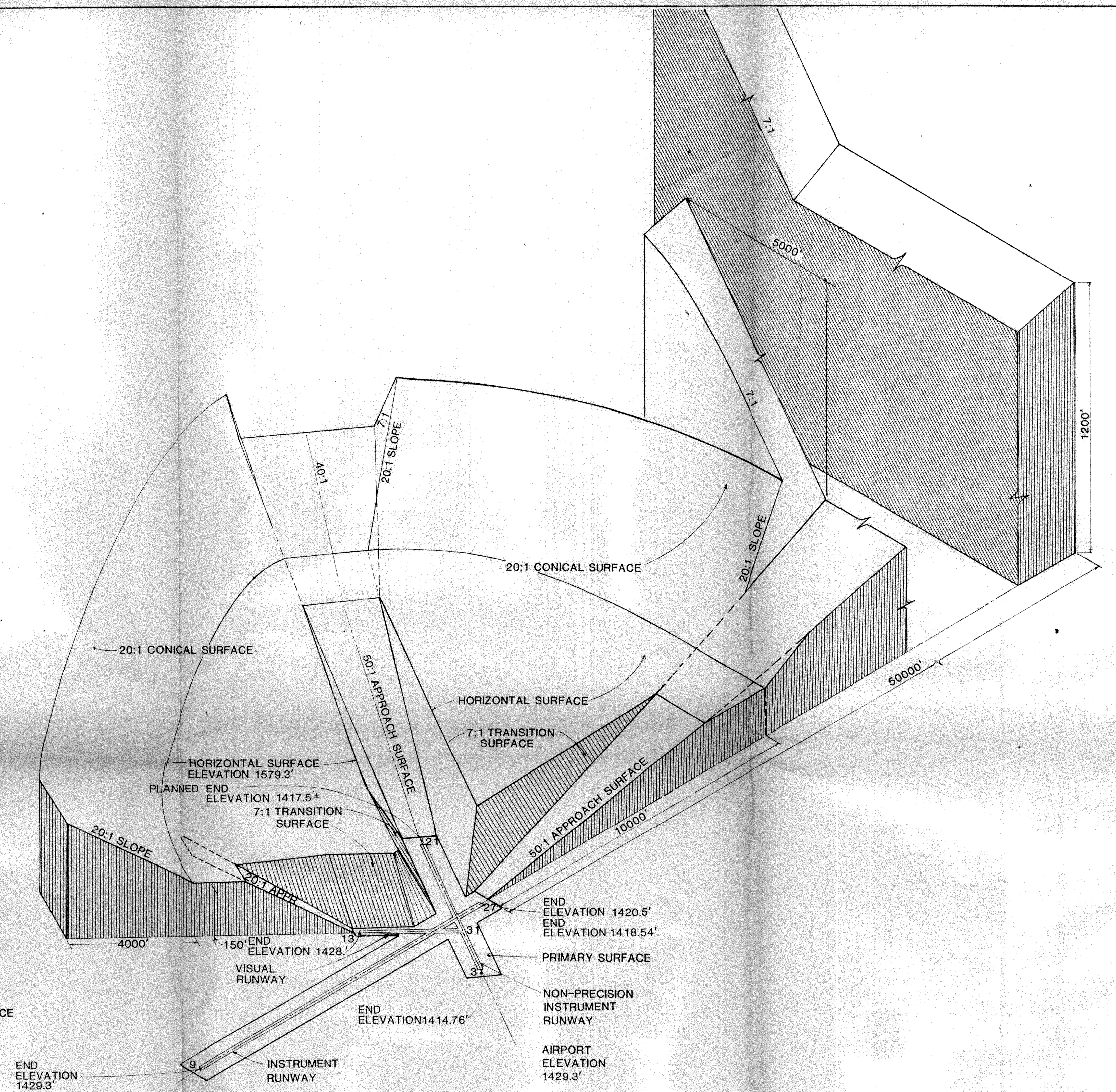


RUNWAY 9-27 IMAGINARY SURFACE PROFILE NO SCALE

NOTE: RUNWAY 3-21 IS THE SAME EXCEPT RUNWAY IS 5700' IN LENGTH



9-27 CROSS SECTION IMAGINARY SURFACES NO SCALE



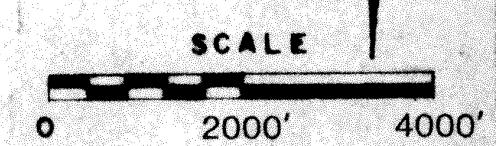
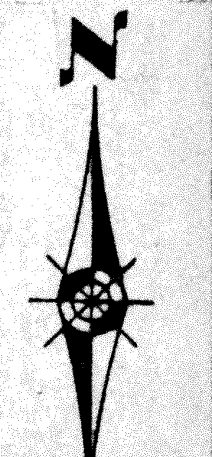
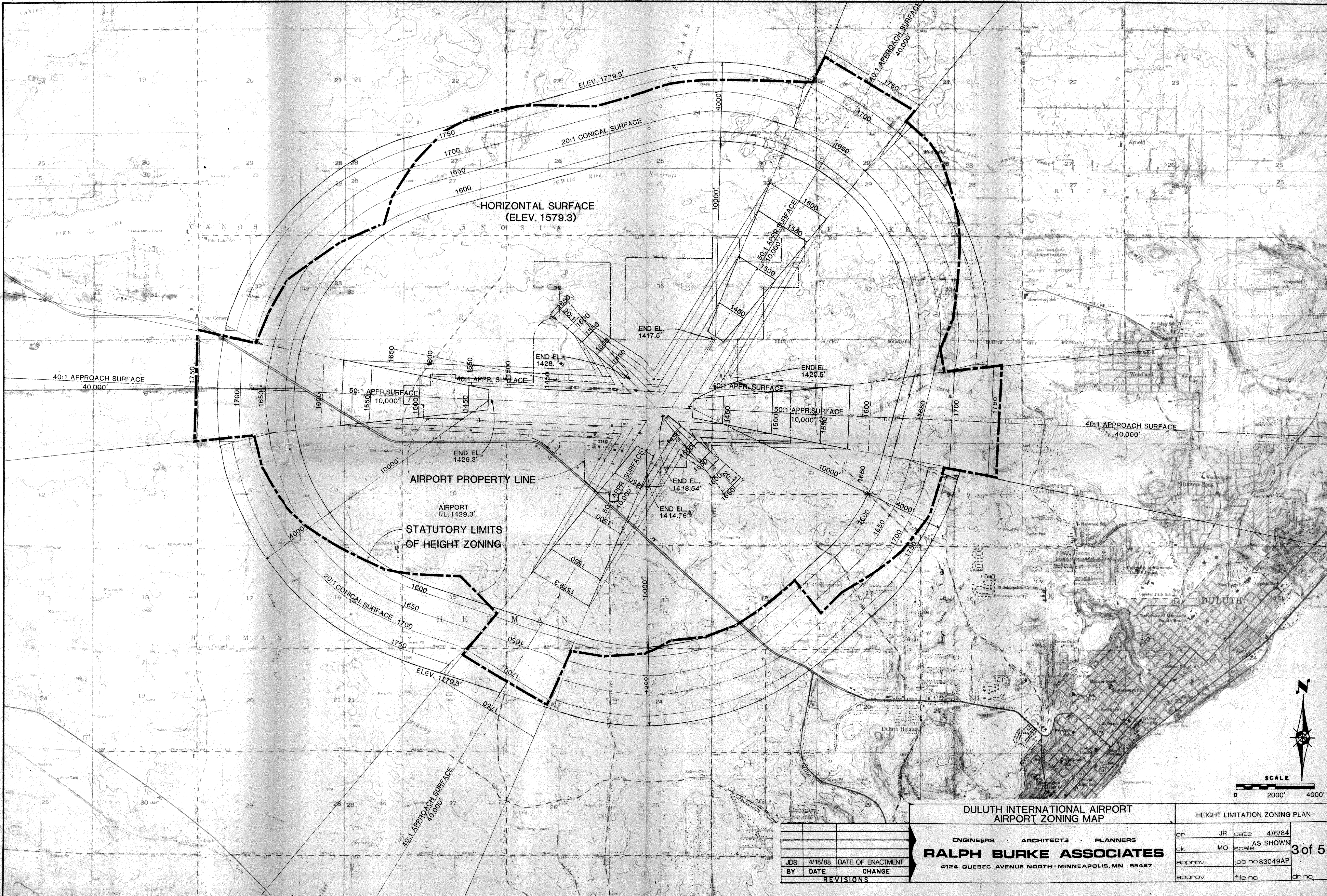
PERSPECTIVE VIEW SHOWING IMAGINARY SURFACES NO SCALE

DULUTH INTERNATIONAL AIRPORT AIRPORT ZONING MAP				IMAGINARY SURFACES SECTIONS	
dr	JR	date	4/6/84	2 of 5	
ck	MO	scale			
approv		job no	83049AP		
approv		file no			dr no

RALPH BURKE ASSOCIATES
 ENGINEERS ARCHITECTS PLANNERS
 4124 QUEBEC AVENUE NORTH-MINNEAPOLIS, MN 55427

BY	DATE	CHANGE
JDS	4/18/88	DATE OF ENACTMENT

REVISIONS



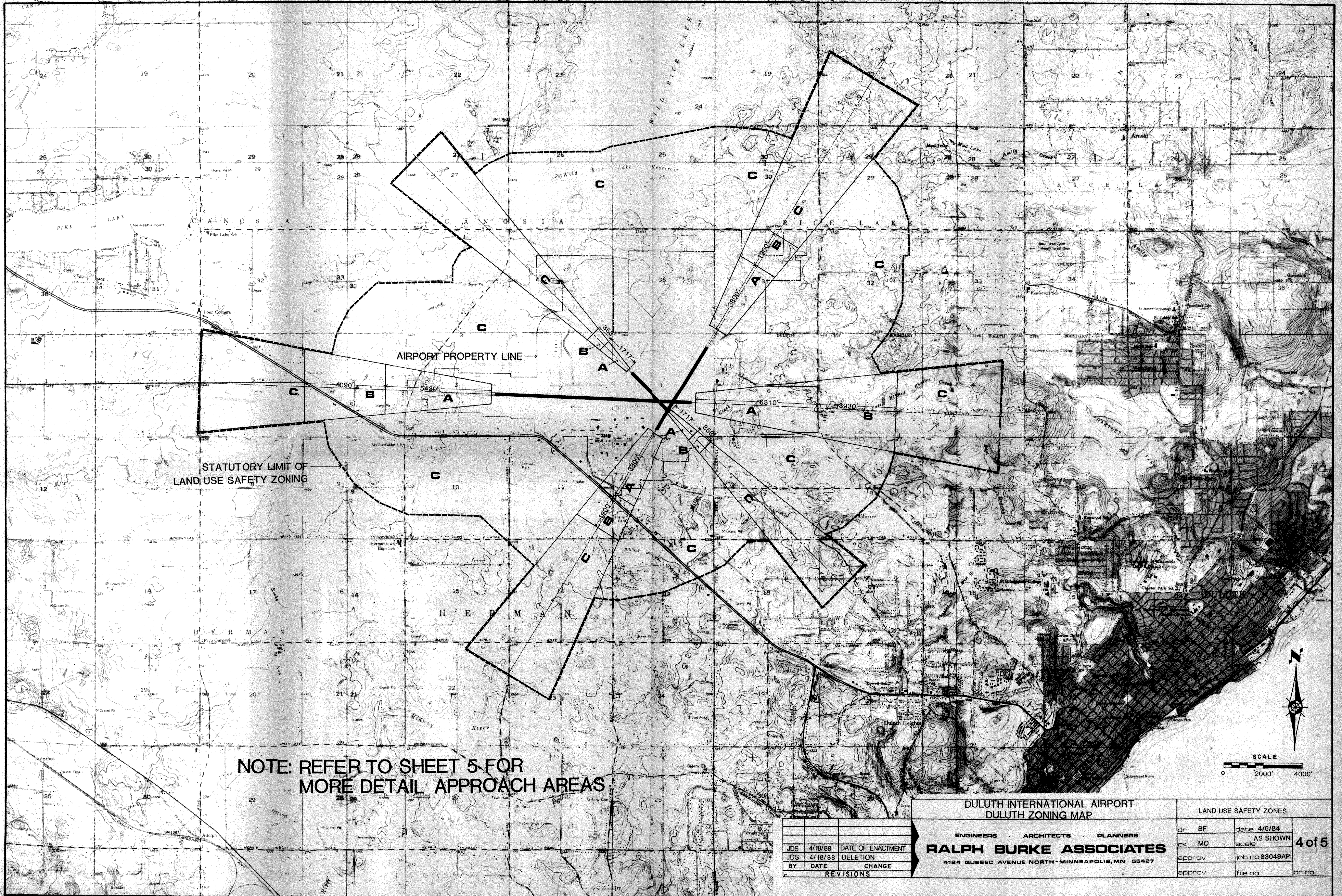
**DULUTH INTERNATIONAL AIRPORT
AIRPORT ZONING MAP**

HEIGHT LIMITATION ZONING PLAN

REVISIONS	

ENGINEERS ARCHITECTS PLANNERS
RALPH BURKE ASSOCIATES
4124 QUEBEC AVENUE NORTH - MINNEAPOLIS, MN 55427

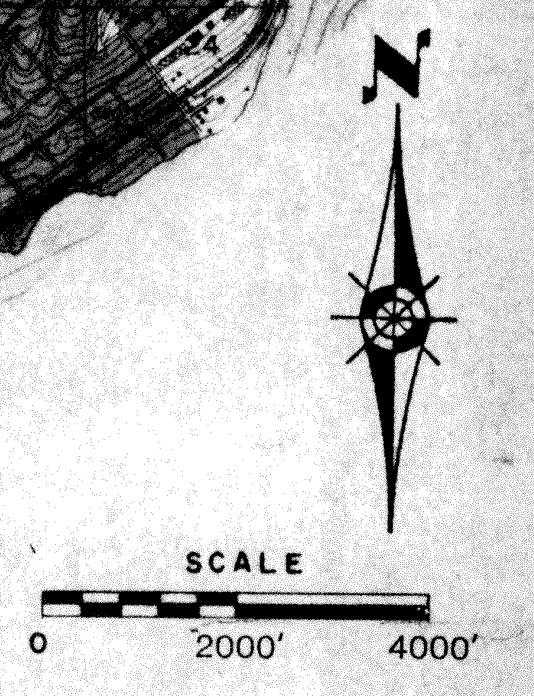
dr	JR	date	4/6/84
ck	MO	scale	AS SHOWN
approv		job no	83049AP
approv		file no	dr no



STATUTORY LIMIT OF
LAND USE SAFETY ZONING

AIRPORT PROPERTY LINE

NOTE: REFER TO SHEET 5 FOR
MORE DETAIL APPROACH AREAS

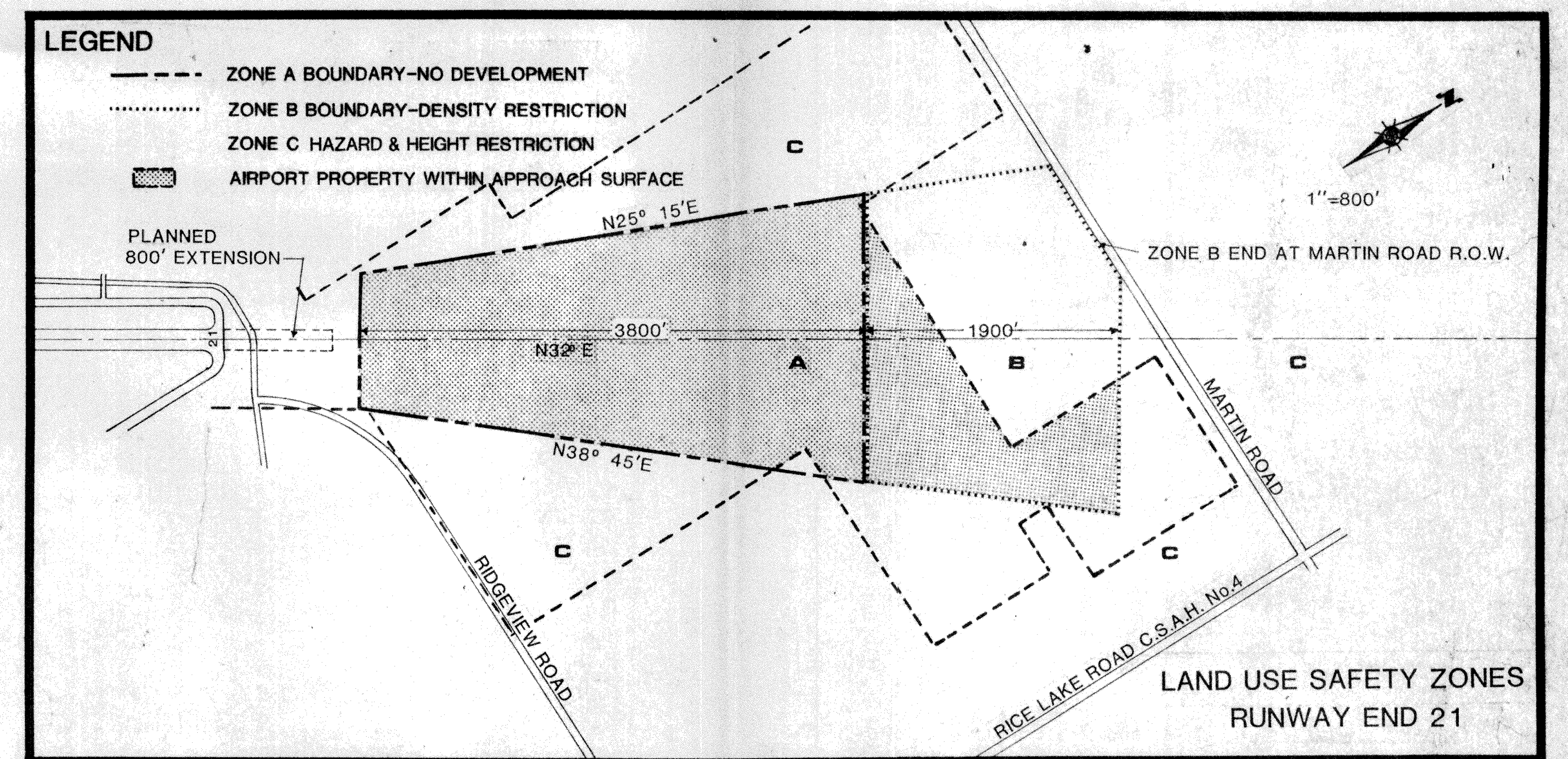
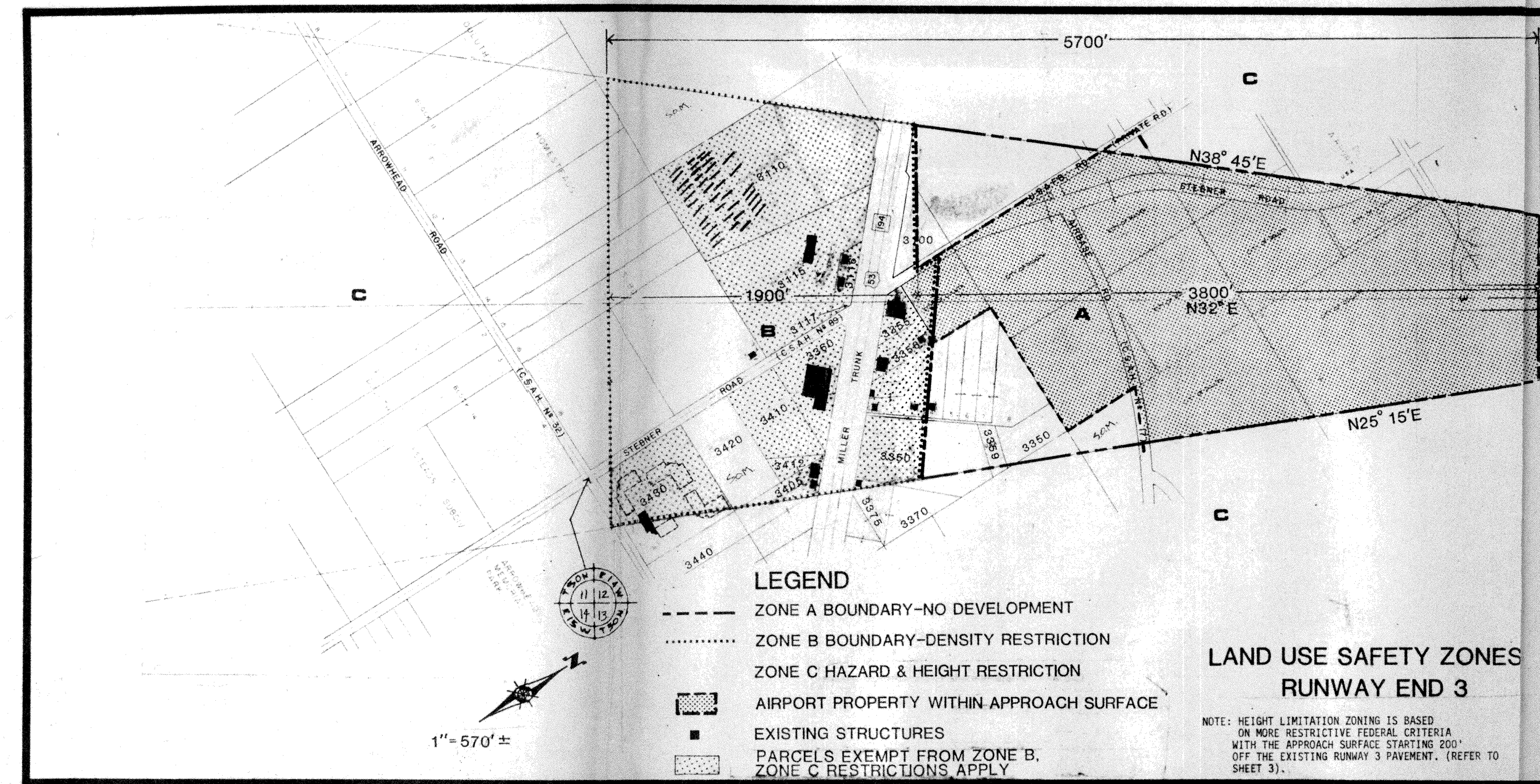
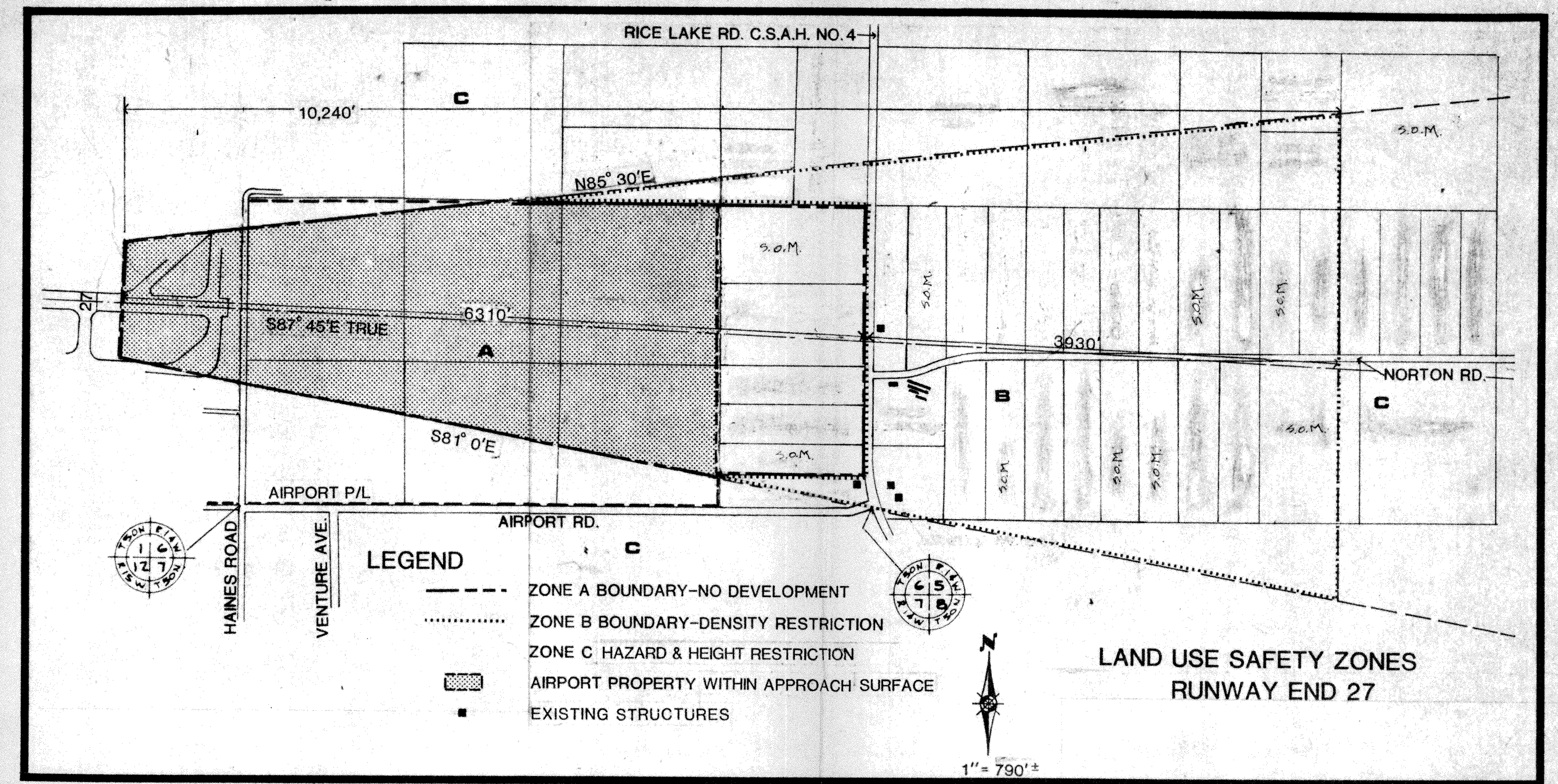
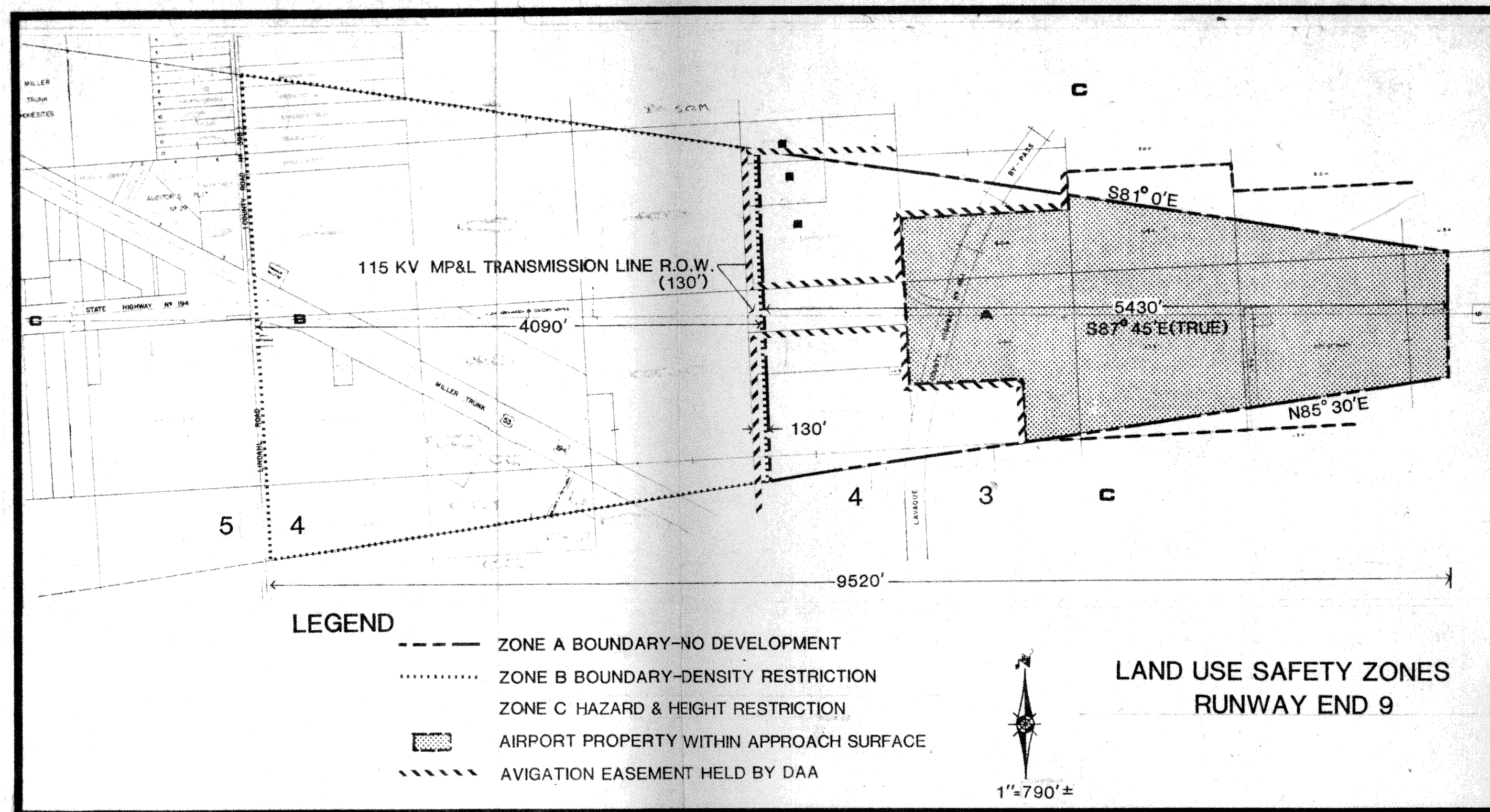


REVISIONS	
JDS	4/18/88 DATE OF ENACTMENT
JDS	4/18/88 DELETION
BY	DATE CHANGE

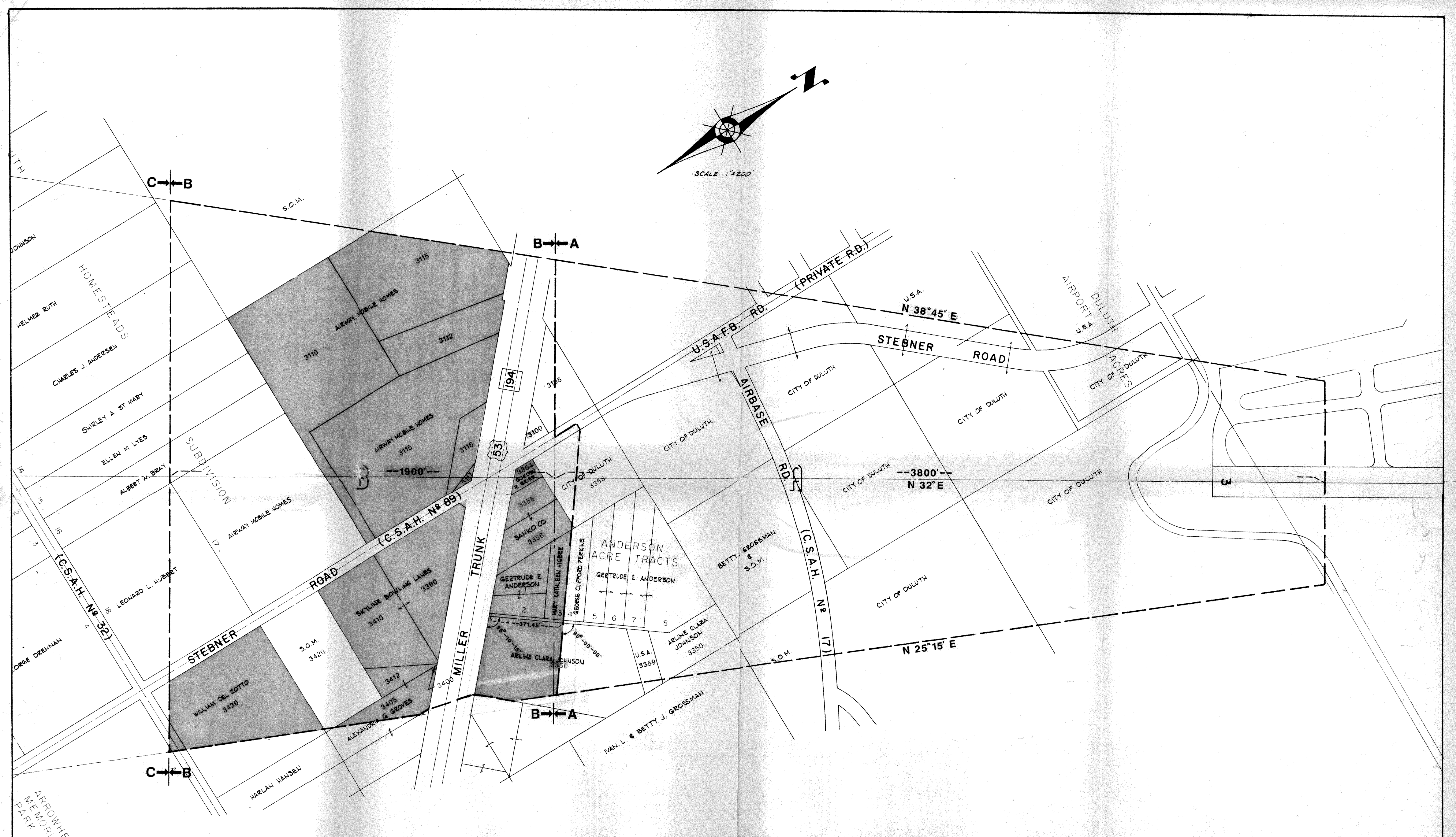
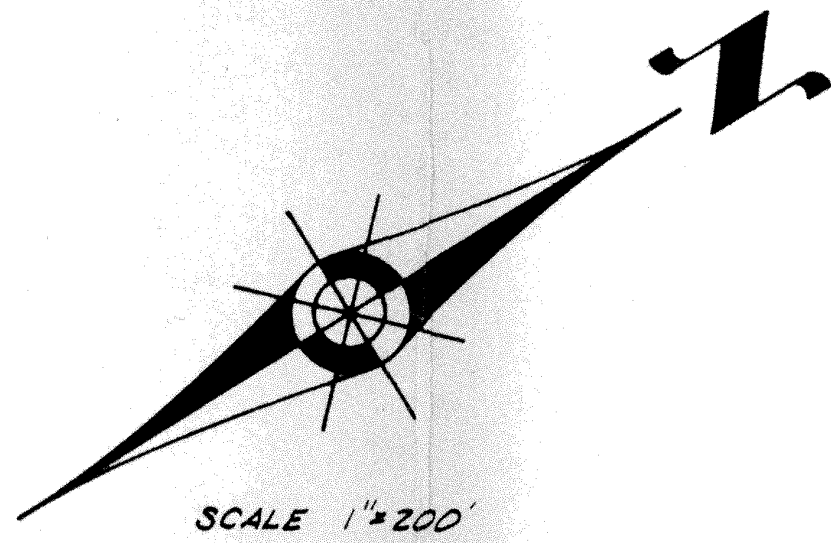
DULUTH INTERNATIONAL AIRPORT
DULUTH ZONING MAP

ENGINEERS ARCHITECTS PLANNERS
RALPH BURKE ASSOCIATES
4124 QUEBEC AVENUE NORTH - MINNEAPOLIS, MN 55427

LAND USE SAFETY ZONES			
dr	BF	date	4/6/84
ck	MO	scale	AS SHOWN
apprv		job no	83049AP
apprv		file no	
		dr no	



DULUTH INTERNATIONAL AIRPORT AIRPORT ZONING MAP		DETAILED LAND USE SAFETY ZONES	
		dr BF	date 4/6/84
RALPH BURKE ASSOCIATES 4124 QUEBEC AVENUE NORTH - MINNEAPOLIS, MN 55427		ck MO	scale AS SHOWN
		BY DATE	CHANGE
REVISIONS		job no 83049AP	5 of 5
		approv	file no
		dr no	



PARCELS EXEMPT FROM ZONE B,
 ZONE C RESTRICTIONS APPLY

DULUTH INT'L AIRPORT		DATE	
LAND OWNERSHIP - SAFETY ZONES		3/11/81	
A & B		E-75&D	
REV. DATE		SHEET	
4	4/18/88	5A	
3	12/30/87	OF 5 SHEETS	
2	12/7/82	R/W 3	
1	5/14/81		

SALO
 ENGINEERS • SURVEYORS • PLANNERS
 15 East First Street • Duluth, Minnesota 55802 • Phone (218) 727-8796